

From the Superintendent's Desk...

We had our summer outing at Buechel Station and really had a great time....a parking lot full of cars, and a building full of people, some even sitting around the outside of the station. We had a train pass at around noon and another at around 3:00 pm and after everyone left and the cleanup crew was doing their thing two more passed.....long and fast. One had an engine on the head end that I had never heard of painted in the Norfolk Southern signature black and white and in a hurry to get home. Needless to say all clean-up stopped as the ones left could watch the trains.

We also had just about every club, or scale represented at the picnic. K-Sons, K&I, 0-6-0, the large scale guys, Southern Indiana, and the Louisville Connecting Lines, if I left anyone or any group out, blame me, no one else.

Again Don Fowler did an excellent job transporting and maintaining the grills and making sure that all had hot food on their plates. He even did me one better by showing up with his "TRAIN HAT" you will never know what comes next from this guy.

We had some food hit the floor and Don threw it to the Hobo's that might come around later in the evening....has anyone seen the pickle jar?

Lots of work goes into these picnics and outings. You do not realize how much until you take part in the preparation and planning, right up to last minute changes and shopping. Thank goodness for computers and emails so we can do this without having to sit down at meetings. It takes a lot of people to do these things and none of us are getting any younger.

Thanks to Don & Karen Fowler, Mark & Bobbi Hedge, Beth Ashley, Bob & Jean Dawson for sticking around and helping clean up after the

picnic was over, and believe it or not my two grandsons were a big help Sean and DJ were picking up trash and putting it in the garbage cans.

Thanks to all the families that brought their favorite dishes to share with everyone, I had a hard time getting a spoon full of everything on my plate. Also I noticed that the bowls were very empty when we started to leave....has anyone seen my peach pie? It was there a few minutes ago but it left.

Anyone seen the pickle jar yet???

I would like to apologize to everyone but will not, as to the time we started eating. When the food comes off the grill, we cannot hold them back, as the smells of it cooking and the quality of the hot food is outstanding. I don't believe that you could tie them down to keep them out of it.

Bruce pointed out that we had too many people in the dining area per the fire code. You have to take into consideration that these are Model Railroaders and sometimes they grow larger than the average person....

LeRoy Duncan is seeking a group of people to travel down to the Kentucky Railway Museum to refurbish some of the scenery on the HO Scale Layout that is on display there.....he told me that he is willing to rent a bus to transport us and furnish the materials to redo the scenery, if you want to take part in this endeavor please contact LeRoy at the KRM.

Bob Johnson suggested yesterday that we rent a bus and travel to the Tennessee Central RR Museum in Nashville, TN to take a train ride. The expense for this trip would be about \$50 + per person, it would be a three hour trip down and three hours back with a three hour train ride along with a two hour layover in an antique village outside of Nashville.....If you are interested, we will proceed with the planning for this event. Please let the Throttle Committee Members know. We would have to rent the bus, block

out the car in Nashville or reserve it, and it could be the dome car.

Joe O'Gara is at home and is still undergoing rehab by the VNA.....

Marylyn Montgomery is scheduled for heart surgery the latter part of July for valve replacement.

We were glad to see Ron and Marylyn at the picnic, Ron commented that she was not going to let him eat until Wednesday after all he ate Saturday.....

Charlie Keeling also was at the Picnic with his daughter.

Jack Jackson's wife fell and broke her wrist last week, but she is doing fine....maybe the next time she will use a baseball bat when she wants to correct Jack.

The Saga of the Pickle Jar continues. Has anyone seen Bruce's Pickle Jar? I think it is still at Kroger's. Someone forgot to get them.....

The picnic is a family event and this was proven by how many families showed up. We all had a great time, and it only took part of the day to visit with the model railroaders, see their lovely wives and some grandchildren.....one of which was crawling around.....and in just general enjoy the moment. Some came early, and stayed late, some came, visited a little, ate and left, but it still was the same, ENJOY, and we did. Even if we did not find the pickle jar.

Remember, that this month our meeting is in Salem at the Salem Depot. This is one that we all enjoy....and with Cecil and Martha it is a pleasure. Maybe we will find the pickle jar there.....

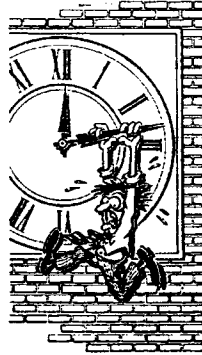
Jerry Ashley
Super Division 8 MCR
NMRA, President Mid-
Central Region NMRA



TIMETABLE

Call an officer if you have any questions

(Phone Number on the last page)



Aug 18, Div 8 Meeting, Saturday, 2:00 PM, Depot Museum, Salem, IN

Aug 26, Sunday, Train Show General Butler State Park

Sep 14-22, KSONS New Albany Library Show

Sep 15, Div 8 Meeting, Saturday, 2:00 PM, Taylor's, Madison, IN

Oct 20, Div 8 Meeting, Saturday, 2:00 PM, Jerry & Beth Ashley's

Oct 27-28, Div 7 Fall Train Show, Lakota West High School, West Chester, O.

Nov 15, Div 8 Meeting, Thursday, 7:30 PM, Airport Industrial Park

Nov 17, Div 8 Train Show and Sale, Highland Post American Legion

Dec, Holiday Party, date, time and location to be announced.

MAINTENANCE TIE FUND

Do you enjoy the color pages in each issue of the Pie Card? It costs \$ 44 a month to bring them to you. The maintenance tie fund helps defray the cost of the color printing. To support this fund please give your contribution of \$ 5.00 or more to the Pie Card editor, Bob Dawson.

January: Larry Hujo, Cecil Smith, Charlie Keeling, Don Fowler, Charlie Buschman, Charlie Fackler

February: Bob Sobotka, John Ottman, Don Fowler, Charlie Buschman, Stephen Taylor, Charlie Fackler

March: Donated by Ward Printing

April: Don Fowler, Ron Rauchmiller, Kevil Rice, Steven Taylor, Charlie Fackler, Ron Montgomery

May: Jim Hinderer, Mike Berry, Herman Weir, Charlie Fackler, John Kelly, Bob Johnson, Jim Harrington, Bill Poteet

Jun: Mike Berry, Bob Johnson, Jim Harrington, Ron Rauchmiller, Kevil Rice, Jack Diehl, Charlie Fackler, John Kelly, Bob Johnson

Jul: Bill Poteet, John Bowman, Bob Johnson, Bob Lawson,

Dale Bradley, Jerry Ashley, Don Fowler

Aug: Bob Lawson, Dale Bradley, John Ottman, Bob Sobotka, Jack Diehl, Herman Weir

Sep: Bob Lawson, Bob Sobotka, Jack Diehl

Oct: Bob Lawson

Model Contest

August

September

October

November

December

January

February

March

April

May

June

July

MOW Equipment

Photos

Steam Locomotives

Displays/Dioramas

No Contest

Freight Cars

Diesels

Commercial Structures

Passenger Cars

Cabooses

Open Loads

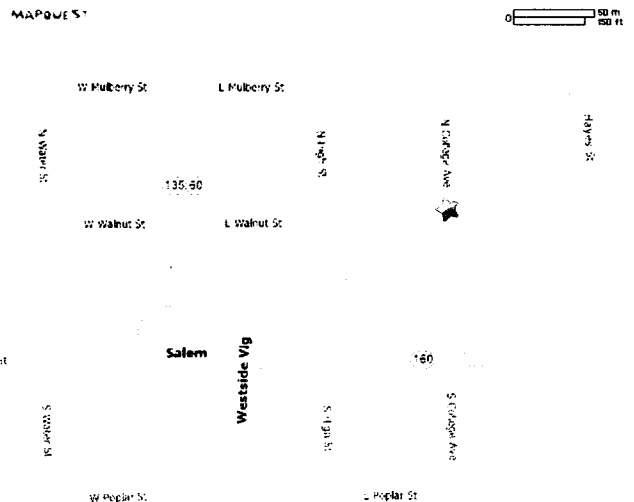
No Contest

Contest Chairman Bill Lynch is looking forward to your entries.



AUGUST MEETING AT THE DEPOT IN SALEM

The August meeting will be 2:00 PM EDT (Louisville Time), August 18, at the Depot Museum, 206 South College Ave. Salem Indiana. After the meeting you can enjoy the Depot Museum and MONON model train layout. Directions to the Depot from Louisville: I-65 north to exit 7, State Road 60 to Salem. At Salem turn right on to Main Street; turn right on to either Poplar or Cherry, both streets end at college Ave.



FALLS CITY LIVE STEAMERS IS LOOKING FOR MEMBERS

Are you interested in 1/8 inch scale live steam? You may want to check out the Falls City Live Steamers Club. The group is a 100% NMRA club and meets at 6:30 PM on the second Tuesday of each month at Buechel Station. The club welcomes new members and is negotiating with Metro Parks to find a location to for a permanent railroad. Call Jay McAfee at 502-957-5011 for more information, or just attend a meeting.

CLAGG TOWER *by Rick Tipton*

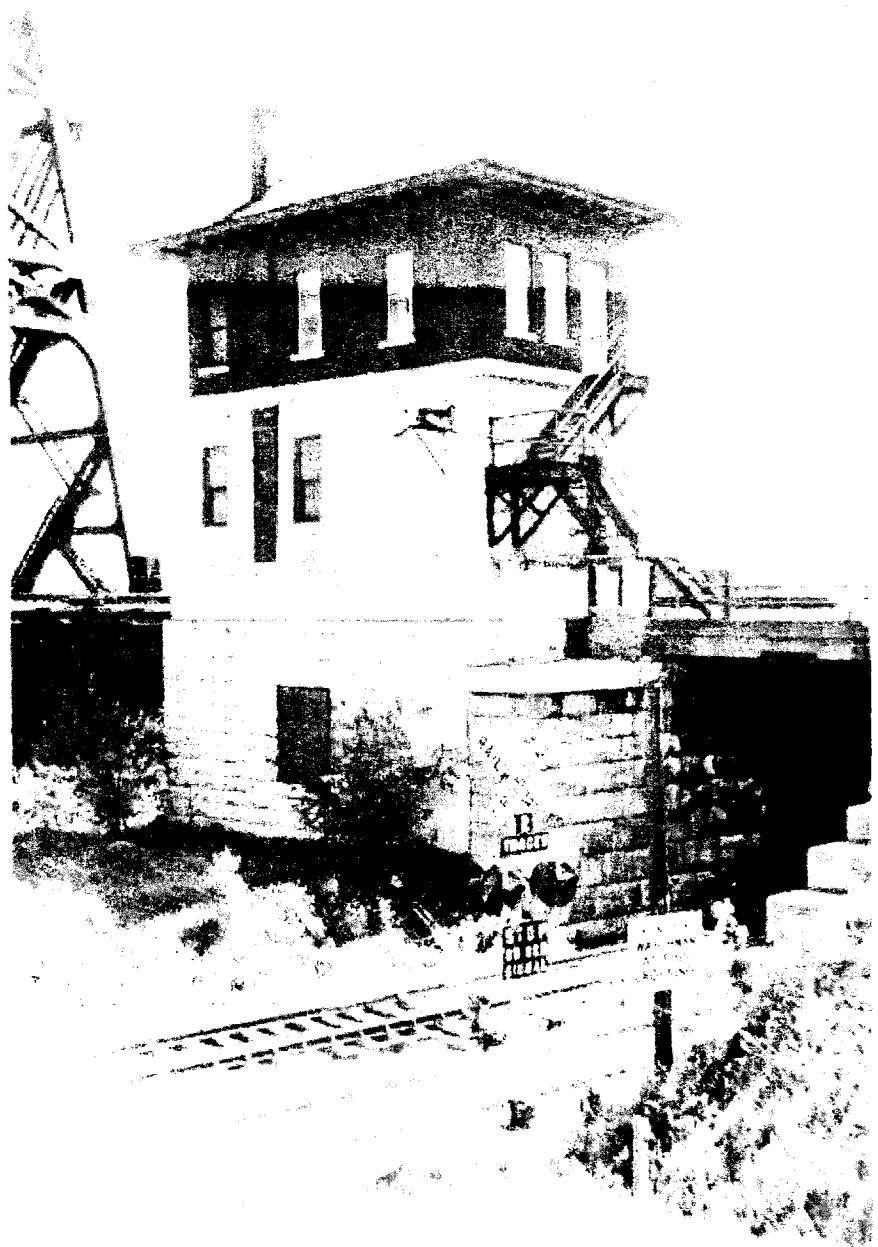
Have you ever noticed that the City of Louisville is missing 14th Street? Once upon a time it had one. But in 1870 the Pennsylvania Railroad's predecessor (nicknamed "The Panhandle") and its ally the L&N built a railroad bridge across the Falls of the Ohio, and entering Louisville at 14th. The Panhandle took over the completed bridge, and controlled its swing span (drawbridge) with "South Tower", an octagonal, two-story structure right on the riverbank. There was also a "North Tower" in Jeffersonville, but that's another story. And railroad tracks from South Tower to Broadway and beyond proliferated in the street until the city gave up, and 14th Street disappeared.

Circa 1917 the "Panhandle" Bridge was replaced by a heavy, double-track structure, and in 1918 a new interlocking tower was built at the Louisville end, controlling a lift bridge across the barge canal that bypassed the Falls. The tower was originally known by its telegraphic call letter ("C"), but somewhere along the line, C tower was renamed for R.W. Clagg, a former PRR train dispatcher at Louisville, who retired in 1924 and died in 1955 at the age of 101.

For years, the railroad had handled train movements by timetable, train order, and manual block. But because rail traffic rose rapidly as Europe entered World War II, a CTC machine was installed in Clagg Tower in 1940, controlling the railroad between Jeffersonville Yard and Louisville Union Station; this remote control of switches and signals included the brand new elevated tracks from Main Street to Broadway. This is undoubtedly when the line was converted from semaphore signaling to PRR's characteristic "position light signals", lighting three yellow lamps in a row to give signal indications. It is said that by 1942, Clagg was handling 200 train movements a day. Louisville railfans, including the late Jack Fravert, went to Clagg to photograph *The South Wind* and many more trains coming and going across the Ohio.

Clagg survived the Pennsy's bad times in the Fifties and Sixties, and Penn Central's worse times in the Seventies. Conrail decided to sell the line from Indianapolis to a shortline, and many people now know this PRR/Panhandle line as "the Louisville & Indiana".

The L&I continues to use the bridge across the river, and Clagg tower is opened one or more times a day by L&I employees to "put down the draw" and let trains across the river. But apparently 67 years is enough for a set of "PRR position lights", and so very recently they were taken down and replaced by more modern signals. The new signals won't look as historic, but the L&I will be able to get parts for them. In this "day and age", it's nice to see a local railroad looking to the future.



*Clagg photo by
Charlie Keeling*

Division 8, MCR, NMRA www.trainweb.org/mcrdiv8
Ivan Baugh, Webmaster

Officers

Superintendent
Jerry Ashley 502-893-0801
Asst. Supt.
Bruce Goreham 502-491-3996
Clerk
Mark Norman 502-254-9249
Treasurer
Stan Perry 502-339-9207

(Committees, continued)

Librarian
Membership
Bruce Goreham 502-491-3996
Show Programs
Mike Berry 502-245-1337
Swap Meet
Bob Dawson 502-368-2607

Trustees

Mike Berry 502-245-1337
Stephen Taylor 812-265-6155
Bob Dawson 502-368-2607

Regional Officers

President
Jerry Ashley 502-893-0801
Vice President
Dick Briggs 614-277-0314
Secretary
Tom Atherton 216-898-9435
Treasurer
Gary Sole 216-650-2192

Committee Directors

Contests
Bill Lynch 812-256-2125
NMRA Achievement Program
Ivan Baugh 502-245-9816
Meeting Programs
Bob Dawson 502-368-2607

We have another N scale modeler who has made an excellent start toward his Master Model Railroader recognition. Chris Broughton has applied for his Golden Spike Award, his author Award, his Scenery Award, and will apply for his Electrical Award when he finishes 1 item. This gives us 3 N scale modelers who are making good progress toward their MMR recognition. Are there other N scale modelers who have work ready to judge? Please contact Jerry Ashley or Ivan Baugh to let us know.

The Pie Card is published twelve times a year by Division 8 of the National Model Railroad Association, Mid-Central Region. Bob Dawson, Editor, 7305 Ticonderoga Drive, Louisville, KY 40214.

Please address all correspondence, letters to the editor, articles to the Pie Card, etc. to the editor...Deadline for submitted articles is the 22nd day of the previous month. The Pie Card goes to the printer by the first of the month.

PIE CARD SUBSCRIPTION RENEWAL

IF THERE IS A "STAR" STICKER ON THE COVER OF YOUR PIE CARD, YOUR SUBSCRIPTION HAS EXPIRED!

Thanks to Don Fowler, Jean Dawson, Karen Fowler, Mark Hedge, Bobbi Hedge, Beth Ashley, Bob Dawson for their cleanup help after the picnic...believe you me it was appreciated.....Jerry

The PIE CARD

Division Eight, MCR, NMRA
Box 99041
Louisville, KY 40269-0041

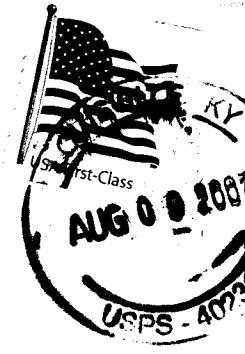
Editor: Bob Dawson
Publisher: Bob Brown
Color Pages: Jim Ward
Circulation: Jerry Ashley
Bob Dawson
Ray Rohmann

Inside this Issue

August Meeting Information
Picnic Photos
Clagg Tower Article

PIE CARD SUBSCRIPTION APPL. ORDER BLANK
The PIE CARD is a publication of Division 8, Mid Central Region, NMRA. It is supported by subscriptions and the "Maintenance Tie" Program. A one year subscription is \$ 10.00. Make checks payable to: Division 8, NMRA-MCR. Send to: Bob Dawson, Editor, 7305 Ticonderoga Dr., Louisville, KY 40214.

NAME _____
ADDR. _____ e-mail _____
CITY _____ STATE _____ ZIP _____



3208 PS
IVAN W BAUGH
9910 SHELBYVILLE ROAD
LOUISVILLE, KY 40223-2908

4022332908 7085

