

## Weathering & Distressing Strip Wood

Clapboard Siding has it's own Technique

Jimmy Simmons – (702) 449-6900 – [jimmy@monstermodelworks.com](mailto:jimmy@monstermodelworks.com)

Kit Building & Scratch Building Services - Dioramas - Scenery

### Strip Wood Weathering Technique

These basic formulas are what I use to weather my strip wood. Any combination would work so use what works best for you. It's just important to use multiple colors so the final result looks like the real world.

The important thing to remember is to use the same stain and powder colorings as you did on your clapboard siding. You want the two woods types to look as if they came from the same source and weathered the same. It will never be perfect, which is perfect for a believable result.

### Washes, Dyes & Powders

Leather Dye & Alcohol Washes are a matter of personal preference. I have 4 or 5 different mixtures, simply to continue to introduce subtle changes in the shading of the wood. To me this helps to mimic real life. Below are the different mixtures I happen to use...

### Stains & Washes

- Monster Mix #1 - Silver
- Monster Mix #2 - Grey
- Monster Mix #3 - Jet Black
- Monster Mix Black Wash Detail Enhancer
- Monster Mix Thinner

In order to make wood look weathered it is important to go out and look at it. Use websites like [www.flickr.com](http://www.flickr.com) to research old wood buildings. You will be amazed at all the different variations of colors and textures. Wood weathers differently in different parts of the country, so be sure to use a color palette that brings realism to your layout.

#### 1. Initial Prep

- a. Sand wood with 400/600 grit sand paper
- b. Hit wood with hard wire brush
  - i. You are just trying to make a few random holes to simulate bug damage.
  - ii. How much damage you need here is up to you, skip this step for newer construction

Stain the wood with 1 - 2 coats of Monster Mix Black Wash Detail Enhancer

- c. I like to stain the wood early in the process as some of the distressing may cause too much of the stain to soak into the wood, causing ugly dark spots. We will be adding more stain later.
- d. Here is also where I will use different dye washes to add variation



## Weathering & Distressing Strip Wood

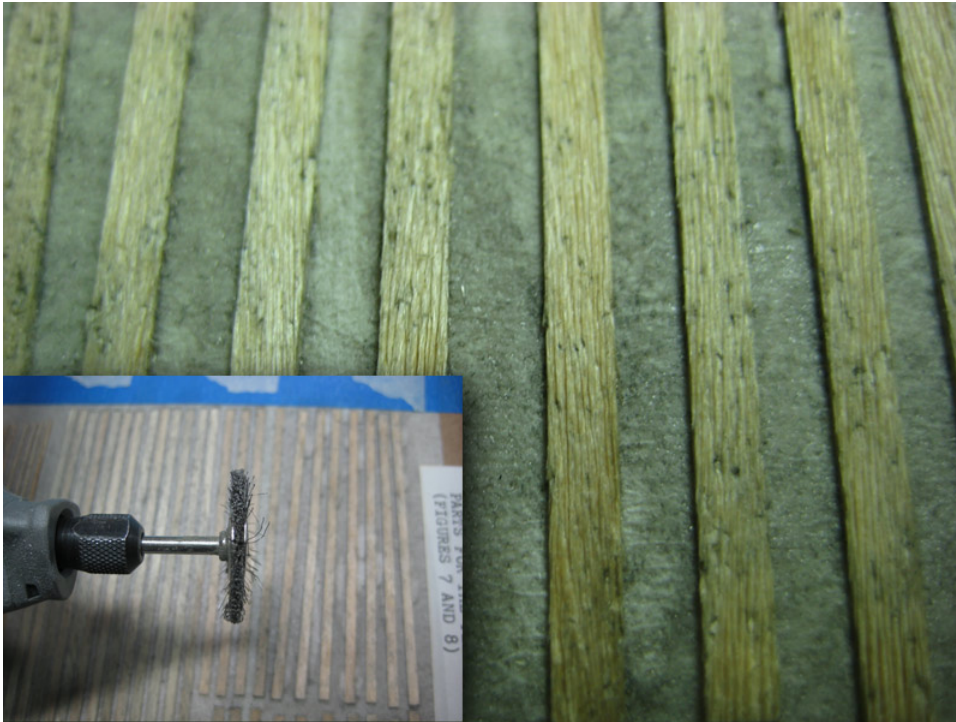
Clapboard Siding has it's own Technique

Jimmy Simmons – (702) 449-6900 – [jimmy@monstermodelworks.com](mailto:jimmy@monstermodelworks.com)

Kit Building & Scratch Building Services - Dioramas - Scenery

### 2. Distress

- a. Add deep cracks with #11 hobby knife
  - i. Great for hacking up the bottom of boards
- b. Add grain with Dremel using a soft steel wire brush
  - i. Play with the speed and pressure you apply
  - ii. I never use a razor knife to add grain on real wood



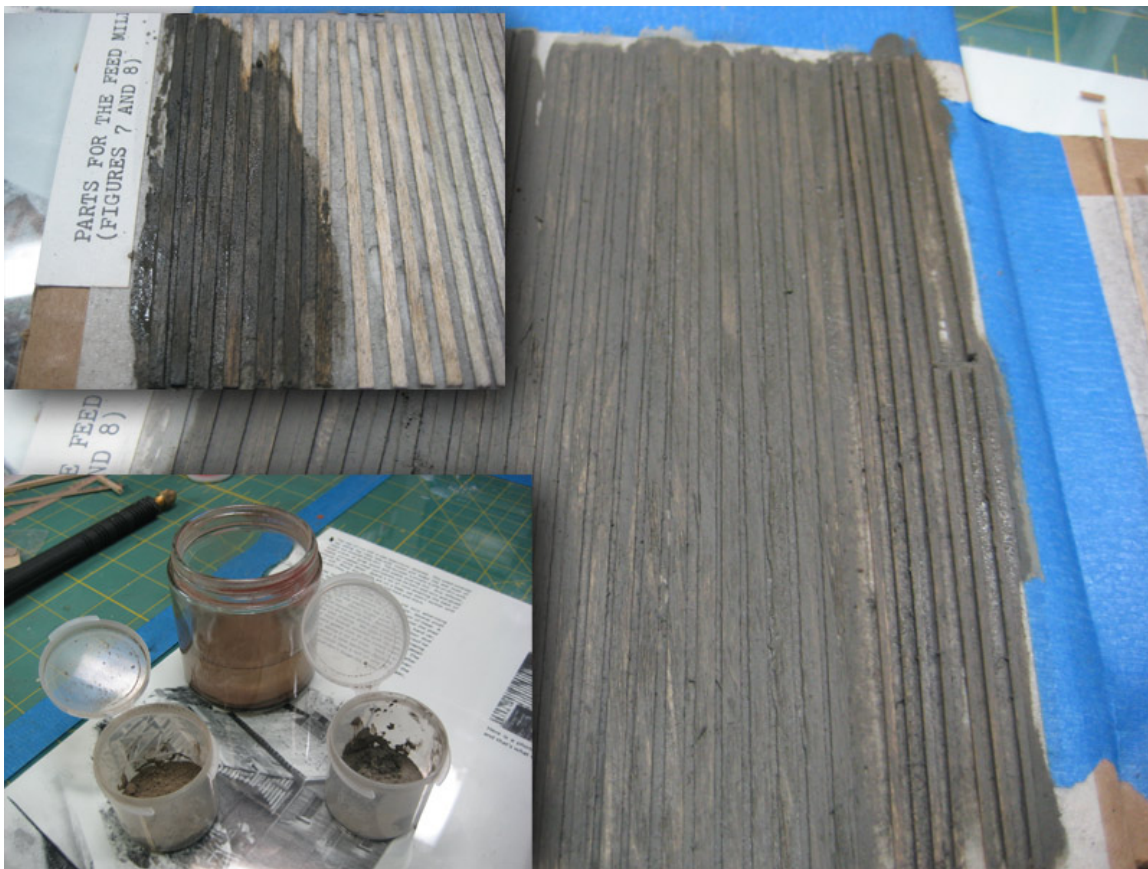
## Weathering & Distressing Strip Wood

Clapboard Siding has it's own Technique

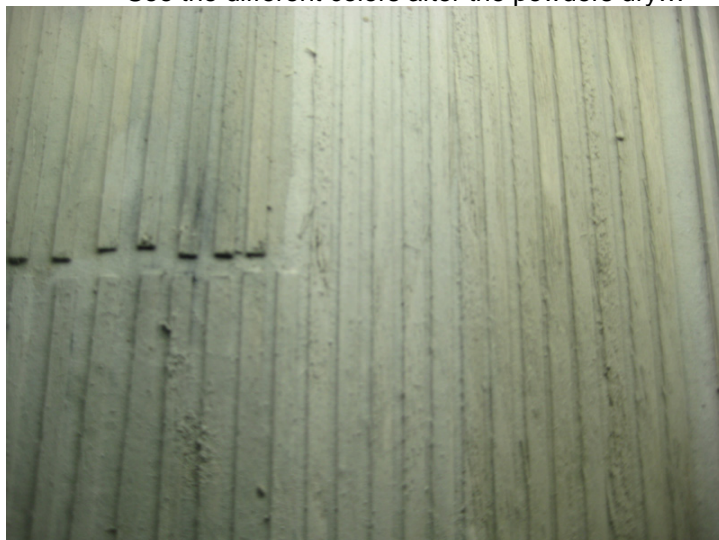
Jimmy Simmons – (702) 449-6900 – [jimmy@monstermodelworks.com](mailto:jimmy@monstermodelworks.com)

Kit Building & Scratch Building Services - Dioramas - Scenery

3. Add weathering powders
  - a. Add the powder to the wood by wetting the brush in the Monster Mix Thinner then dipping it into the powders. When applying to the wood you may need more powder and/or more Thinner, so don't be shy and use what you need.
  - b. I like to use a Brown/Gray mix and a Gray/Brown mix
    - i. I apply each color mix to approx half of the boards, this helps replicate random, real world effects
    - ii. Experiment with rust and/or other powder colors... there is even wood that weathers with a bluish hue.



4. Let dry  
See the different colors after the powders dry...



## Weathering & Distressing Strip Wood

Clapboard Siding has it's own Technique

Jimmy Simmons – (702) 449-6900 – [jimmy@monstermodelworks.com](mailto:jimmy@monstermodelworks.com)

Kit Building & Scratch Building Services - Dioramas - Scenery

5. More Distressing (if needed)
  - a. Use the file cleaner to add some deep grain; it is also great to chew up the tops and bottoms of boards.
  - b. More cracks with #11 by making tiny slices just under the powder it will add more definition to your wood grain
    - i. The powder will start to break away from the wood with each slice. Try to keep the powder where it lies. Once you are done you need to use the Monster Mix Thinner to wash the powder back into the cracks. This also changes some of the colors as the powders mix again.



## Weathering & Distressing Strip Wood

Clapboard Siding has it's own Technique

Jimmy Simmons – (702) 449-6900 – [jimmy@monstermodelworks.com](mailto:jimmy@monstermodelworks.com)

Kit Building & Scratch Building Services - Dioramas - Scenery

- c. Knot holes
  - i. Use the glue applicator of the Monster Nailer to make knot holes
    - 1. Smaller pieces of wood will split if you push the hole through, so use small drill bits to make the hole. Enter in at an angle as to make an oval type hole.
  - ii. Use #11 knife to add definition to the knot hole
    - 1. You can also follow the existing grain lines or cracks; let the wood determine where the knot is to go.
- d. Can add more bug damage here as well by hitting the wood with the hard brush again



- 6. Wash with each Monster Mix Stain #1, #2 and #3.
  - a. Not over each other, just like you did with the powders, break the strip wood into four sections and apply each Stain on a different section



## Weathering & Distressing Strip Wood

Clapboard Siding has it's own Technique

Jimmy Simmons – (702) 449-6900 – [jimmy@monstermodelworks.com](mailto:jimmy@monstermodelworks.com)

Kit Building & Scratch Building Services - Dioramas - Scenery

7. Let Dry
  - a. See the color differences... just wait till we blend it.



8. Rub with the steel wool (super fine #0000)
  - a. Use your judgment as this step don't rub too hard at first...



## Weathering & Distressing Strip Wood

Clapboard Siding has it's own Technique

Jimmy Simmons – (702) 449-6900 – [jimmy@monstermodelworks.com](mailto:jimmy@monstermodelworks.com)

Kit Building & Scratch Building Services - Dioramas - Scenery

9. If needed you can hit with one last coat of the Monster Mix Black Wash Detail Enhancer



## **Weathering & Distressing Strip Wood**

Clapboard Siding has it's own Technique

Jimmy Simmons – (702) 449-6900 – [jimmy@monstermodelworks.com](mailto:jimmy@monstermodelworks.com)

Kit Building & Scratch Building Services - Dioramas - Scenery

You can see the final result really won't be fully appreciated until the boards start going together. Once all the strip wood is weathered and dry, remove the pieces from the tape and mix all up.

This gives a natural effect of each piece of wood weathering slightly different from the rest. It may seem like a lot of steps, but once you get going it gets easier.

Remember I like to embellish some in my details so the viewers mind will put in the rest. I call it Proto-Impressionism, being prototypically correct in the design and function while achieving the look and feel of the big picture. Slightly out of scale details help the mind fill in the blanks.

The Monster is in the Details as it is my slogan (I guess that's what you call it). -Jimmy Simmons

