



# The Pie Card



Division Eight Newsletter - Mid-Central Region, National Model Railroad Association

Volume 48

August 2009

Number 8



## From the Superintendent's Desk

This is being written hours before we take our steam ride and celebrate together.

It's been just over a year that you entrusted the leadership of the division with me. Please permit me a brief look back. The officers and trustees have endeavored to serve you faithfully and well. We have been fortunate to continue the many things we have been doing well and add a make a few modest changes as well. What matters though is your opinion, not mine. We are all in this together. Keep the feedback coming.

I had an interesting experience this past week that you might find of interest. It never ceases to amaze me how our lives are interconnected in subtle and unforeseen ways. Let me explain.

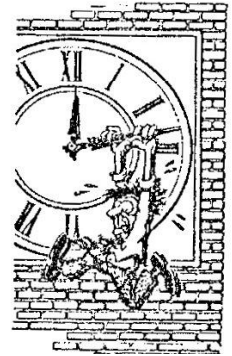
Thirty-eight years ago, my paternal grandfather and I were sitting next to one another talking. Taking a few days away from school, I had driven to Kensett, Arkansas to spend time with my grandparents and other family. Everyone else had gone to bed. Grandpa sat there with the reading lamp on telling stories of his time working on the railroad. He was a welder in the shops. How I wish I had the forethought to record those conversations! After awhile, he reached for a thin volume on the bookshelf - *The North Arkansas Line*. He brought the pictures and

stories of the line to life! There on page 216, he is pictured with the rest of the day shift on locomotive #55. He's on the bottom row, eighth from the left. It was years later before I learned why he was in Harrison, quite a distance from home. There was my grandfather alongside several others helping build our country.

In time, a copy of *The North Arkansas Line* was purchased and read. Periodically, it was taken off my bookshelf to show to friends and family. A few days ago, there was this nagging feeling to skim the first few pages again. Somehow, I knew there was something there. Sure enough, in the opening paragraphs, the author, James B. Fair Jr., gives credit to one of our very own, the late E.G. Baker. His name was familiar to me from my time as the librarian. Nearly four decades after my grandfather and I sat together reminiscing about his time on the railroad, here I am in Louisville with Division 8. Another circle in life has closed.

Mark

## TIMETABLE



**Aug 8**, Summerail, CUT, Cincinnati, OH

**Aug 20**, Div 8 Meeting, Thursday, 7:30 PM, Bob Frankrone's

**Aug 30**, Ky Flyer Train Show, 11:00 AM to 5 PM, Gen Butler St. Pk.

**Sep 19**, Div 8 Meeting, Saturday, 2:00 PM, The Taylor's, Madison, IN

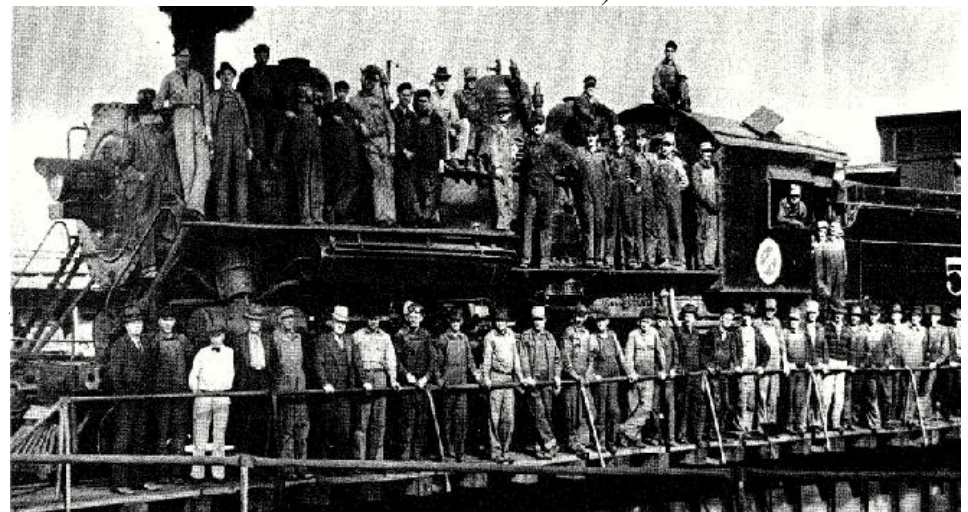
**Sep 20**, AP Judge Training, Sunday 2:00 PM, Meadowview Church

**Oct 17**, Div 8 Meeting, Saturday, 2:00 PM, Meadowview Church

**Nov 8**, Div 8 Meeting, Thursday, 7:30 PM, Location TBA

**Dec 18**, Holiday Party, Friday evening, Kyana Car Club.

*(Note that several meetings will be on Thursday evenings this year. Check the Time Table each month for meeting location.)*



**Model Contest**

<b>AUGUST</b>	<b>MOW Equipment</b>
September	Photos
October	Steam Locomotives
November	Displays/Dioramas
December	No Contest
January	Freight Cars
February	Diesels
March	Commercial Structures
April	Passenger Cars
May	Cabooses
June	Open Loads
July	MOW Equipment

**AUGUST MEETING AT THE HOME OF BOB FRANKRONE**

The August meeting of Division 8 will be Thursday, August 20, 7:30 PM at the home of Bob Frankrone. Bob's HO scale layout, The Louisville Southern Lines, is a large industrial layout. It measures 30' x 15' with approximately 200' of mainline track, and it is about 50% scened. He also has an 8' x 2.5' HO switching module which he built during a short stint with the K&I modular club. Bob's layout was featured in the November 2002 edition of *Model Railroading* magazine.

Although progress on the LSL has been slow since Bob last hosted Division Eight in November of 2005, there are some visible changes. The most notable is the addition of a 2' x 6' peninsula in the town of East Bluefield. Here, the Valley Cement Company dominates the skyline with its 16 cement silos and 127' tall smoke stack. It is serviced by two silo tracks, a warehouse track, and two storage sidings.

**Directions to Bob's home:** Bob lives at 2803 Winterhaven Road. From the Watterson Expressway, take Breckinridge Lane south to Manner Dale (6<sup>th</sup> traffic light). Turn left at the light onto Manner Dale, travel one block and take the first left onto Hunsinger Lane. Follow Hunsinger Lane as it curves sharply to the left. Once beyond that curve, go another block and take the first right onto Eastside Drive. Follow Eastside Drive all the way to the end of the subdivision, where it makes a sharp right turn and becomes Winterhaven Road. Bob's house is the second one on the left, the house with four white columns on the front porch. Because seating is limited, you may want to bring a portable chair. Bob is looking forward to hosting Division Eight members and friends. See some photos of Bob's layout on Page 6.

**MODEL CONTEST AWARDS PRESENTED AT ANNUAL PICNIC**

Our new awards contest program began this past January. Over the months points have been awarded for each month's model contest. First, second, and third place winners were chosen based on popular vote. Gift certificates donated by Scale Reproductions were awarded to the winners. First place \$ 100, second place \$ 75, and \$ 50 for third place. The winners were: First place, Bob Kuchler; second place, Charlie Keeling, and third place Bob Sobotka. The contest begins anew with the August meeting. Awards will be made at the 2010 picnic.

**YOU BE THE JUDGE?**

Would you like to be a judge in the NMRA Achievement Program? Do you want to know what the judges are looking for when examining a model? In September you can have an opportunity to find answers to these and any other questions you may have concerning judging for Convention Contests and the Achievement Program. As Jerry announced in his column last month, the Division will be offering an "AP Judging School". The date will be Sunday September 20, at 2:00 PM. Tentative location is Meadowview Presbyterian Church, 2944 Breckinridge lane. Bob Weinheimer MMR, Mid Central Region Contest Chairman will be the instructor. Even if you have no thought of becoming a judge, the material covered in this program will help you improve your modeling skills. You must be an NMRA member to attend. If you have any questions, or interested in attending call Jerry Ashley at 502-893-0801 or email him at: [jerryashley@insightbb.com](mailto:jerryashley@insightbb.com).

**SWAP MEET PLANNED IN CONJUNCTION WITH SELLERSBURG CELEBRATES**

The Southern Indiana Modular Railroad Club along with other layouts will be set up again this year at Sellersburg Celebrates on August 29-30, 2010. They will be at a new location: Moose Lodge, 1040 S. Indiana Ave. (US 31). Also new this year, the club is sponsoring a swap meet on Saturday, August 29. For information contact Jeff McMahan at 502-415-2194 or at Email: [trainnutt56@yahoo.com](mailto:trainnutt56@yahoo.com). Parking and admission are free.

**Meeting Minutes**

The official minutes are published on the Division 8 website. You can view them at <http://div8-mcr-nmra.org>.

**SCALE REPRODUCTIONS, INC.**

3073 Breckinridge Ln. 502-459-5849  
Large selection of HO & N Scale products.  
Walters and Digitrax dealer. Everything you  
need for your layout. Helpful sales staff.  
Mon-Fri 10-7:30, Sat 10-5, Sun 1-5  
[www.srihobbies.com](http://www.srihobbies.com)

At the Picnic



**Presentation of model contest awards.** Upper left: First Place, Bob Kuchler; upper right, second place, Charlie Keeling; above left, third place, Bob Sobotka. Above right, our Sergeant at Arms Henry Eight Ball attended.



Above left: Shop tour. Above right: train ride.

For more pictures, check the Division 8 web site: <http://div8-mcr-nmra.org>.

### Pike Showcase: Tom Lindquist

Tom's layout fills most of his basement. He enjoys creating detailed scenes and models the L & N, C & O, and Southern in HO.



Pike Show Case (continued)



**Pike Show Case - Tom Lindquist (concluded)**



**August Meeting Preview**

Below are two views of Bob Frankrone's Louisville Southern Layout. Bob is hosting the August meeting at his home.



**Trackside Kentuckiana**



CSX is in the process of replacing its bridge over Salt River near West Point, KY on the LH & St. L Subdivision. The photo of the bridge is courtesy of Charlie Bucola. The crane was photographed at Katharyn Station.

## MAINTENANCE TIES FUND

Do you enjoy the color pages in each issue of the Pie Card? It costs \$ 44 a month to bring them to you. The maintenance tie fund helps defray the cost of the color printing. To support this fund please give your contribution of \$ 5.00 or more to the Pie Card editor, Bob Dawson. Donors for 2009 to date are:

**\$ 50 or more:** Don Fowler, Ralph Bracewell

**\$ 25 to \$ 45:** Charlie Fackler, Bob Lawson, Ivan Baugh, Jim Kuzirian, Larry Hujo

**\$ 5 to \$ 20:** Stephen Taylor, Charlie Buschmann, Eric Waggoner, Bob Frankrone, Bob Johnson, Jim Harrington, Charlie Keeling, Short'n'Sassy Embroidery, Mark Hedge, Joe Fields, John Ottman, Bill Poteet, Ron Montgomery, Jerry Ashley, Ed Brennan, Frank Becker, John Henle, Jack Diehl, Cecil Smith, Ryan Eckler, Ron Rauchmiller, Rick Williams, The Roundhouse Train Shop, Tom Lindquist.

## FROM THE MEMBERSHIP CHAIRMAN- NMRA Liability Insurance

*Bob Sobotka, Division 8 Membership Chairman*

I have previously mentioned the importance of our NMRA liability insurance and the impact of NMRA membership on this coverage. Using information available to everyone on the NMRA website I will summarize what this coverage is and why NMRA membership is so important to secure this coverage.

I can not imagine anyone not understanding the necessity of liability insurance these days. We hear about people being sued and see advertisements for lawyers asking "have you been injured?" on television. Some of us, in fact, live in fear of being sued to the point it controls our lives. Luckily for us the NMRA has secured a liability insurance policy.

This policy covers all NMRA activities, national, region, and division and can also be obtained by 100% NMRA clubs (like the K&I) and NMRA SIG (Special Interest Groups). Coverage is automatic for all NMRA activities and no advance reporting is required, although HQ appreciates a summary for events to identify their annual exposure. A maximum of \$1 million in liability coverage is extended to cover NMRA activities. Covered entities must operate under NMRA National Regulations (hence the need to update the Division 8 bylaws). Otherwise coverage could be jeopardized as well as the future of the liability insurance program itself. If an organization has non-NMRA members this coverage would likely be jeopardized as well. This was the main reason Division 8 changed its bylaws to eliminate non-NMRA members from division membership.

NMRA members are covered as well as non-NMRA members provided they are invited to participate in an event. Non-members, however, may not be covered if they are specifically named in a claim. This applies to non-member vendors at a division swap meet. Home layout tours during

an NMRA event are covered but tours of a non-member's layout, even if it is part of an NMRA event are NOT covered. NMRA recommends that a non-member in this position simply purchase a "rail-pass" membership to cover themselves.

Coverage for 100% NMRA clubs is available for a \$50 administration fee. NMRA estimates the cost of a similar policy off the street would cost a club \$1,000. The club must have 100% NMRA membership and the policy also extends a \$100,000 liability coverage for damage due to fire. Property insurance is also available for an additional fee.

I hope everyone has a better understanding of what is covered and why NMRA membership is so important. I have only summarized the scope and application of this coverage. Additional information is available by contacting the NMRA or visiting the insurance page of the NMRA website at: <http://www.nmra.org/national/insurance/insurance.html>

WELCOME NEW MEMBERS: Sonny Driscoll - Louisville, KY; Beth Ashley - Louisville, KY

## SEPTEMBER MEETING PLANS

The September Division 8 meeting will be Saturday September 19 at the home of Stephen and Karen Taylor in Madison, Indiana. As in the past, we are asked to bring a covered dish, the Taylor's will supply the meat. See details in the September *Pie Card*.

## AT THE DIVISION EIGHT PICNIC

Approximately 35 members and their families descended on the Kentucky Railway Museum for our annual picnic. First we had a tour of the shop area. While in the shop we were able to climb on and check out recently restored motor car M55-1. A 1927 Brill product, the M55-1 carried passengers on the Frankfort & Cincinnati Railroad for 25 years before being retired in 1952.

After lunch, contest awards were presented, and then we headed for our train. We boarded former KATY car 884 and were soon on our way to Boston. We were told that rebel raiders were in the area, and to our surprise, our train was attacked on the return to New Haven. We were boarded and shook down for loose money (for the good of Crusade for Children) and then made free to resume our return journey.

Thanks to Eric Waggoner for organizing a great day of activities.

## Division 3 Offers Cars

Division 3, Mid Central Region is offering two different Virginian & Ohio HO gondola models. The models are available with three numbers in both oxide red and black, either in kits or ready to run (RTR). Prices: Kits each, \$ 17: \$ 18 RTR. Packs: One red one black, \$ 28; Six kits \$80 (3 lbs shipping priority). Six RTR \$ 108. All prices given include postage.

Checks to money orders to: Division 3 MCR, 6493 Anvil Drive, Waynesville, OH 45068.

**Division 8, MCR, NMRA**<http://div8-mcr-nmra.org/>

Ivan W. Baugh, webmaster

**Officers**

Superintendent  
 Mark Norman 502-254-9249  
 Asst. Supt.  
 Bruce Goreham 502-491-3996  
 Clerk  
 Eric Waggoner 502-244-6628  
 Treasurer  
 Jim Ward 502-836-3078

**Trustees**

Bob Frankrone 502-491-9920  
 Don Fowler 502-448-0628  
 Bob Dawson 502-368-2607

**Committee Directors**

Contests  
 Bill Lynch 812-256-2125  
 NMRA Achievement Program  
 Jerry Ashley 502-893-0801  
 Meeting Program  
 Bob Dawson 502-368-2607

**Committees (continued)**

Librarian  
 open  
 Membership  
 Bob Sobotka 502-365-3690  
 Show Programs  
 Mike Berry 502-245-1337  
 Swap Meet  
 Bob Dawson 502-368-2607

**Region Officers**

President  
 Dick Briggs 614-277-0314  
 Vice President  
 Merlyn Jarman 812-539-3232  
 Secretary  
 Tom Atherton 216-898-9435  
 Treasurer  
 Gary Sole 216-650-2192

*The Pie Card* is published twelve times a year by Division 8 of the National Model Railroad Association, Mid-Central Region, Bob Dawson, Editor, 7305 Ticonderoga Drive, Louisville, KY 40214.

Please address all correspondence, letters to the editor, articles to *The Pie Card* editor. Deadline for submitted articles is the 22nd day of the previous month. *The Pie Card* goes to the printer by the first of the month.

**PIE CARD SUBSCRIPTION RENEWAL**

IF THERE IS A "STAR" STICKER ON THE COVER OF YOUR PIE CARD, YOUR SUBSCRIPTION HAS EXPIRED!

***The Pie Card***

Division Eight, MCR, NMRA  
 Box 99041  
 Louisville, KY 40269-0041

Editor: Bob Dawson  
 Asst Editor: Rick Tipton  
 Layout Editor: Ivan W. Baugh  
 Publisher: Bob Brown  
 Color Pages Publisher: Jim Ward  
 Circulation: Jerry Ashley  
 Bob Dawson  
 Ray Rohmann

**Inside this Issue**

August Meeting Information  
 Pike Showcase-Layout of Tom Lindquist  
 Model Contest Annual Award Winners