



The Pie Card



Division Eight Newsletter - Mid-Central Region, National Model Railroad Association

Volume 48

June 2014

Number 5

From the Superintendent's Desk



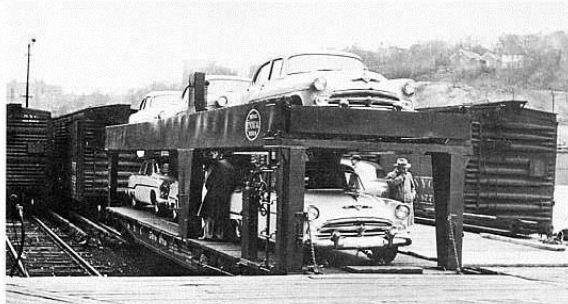
"That car is not prototype" -- or is it? A number of unique cars made for different railroads did exist and model companies like Lionel and Athearn reproduced them. These cars weren't dreamt up, they actually existed -- well, maybe not Lionel's giraffe or aquarium cars.

At a recent ops session, the conversation was centered around a fellow railroader who had bought a number of

Athearn 50-foot flat cars with the Evans Auto Loader frame on them to carry automobiles. You have seen them; they look just like the one Lionel made years

ago. "I don't know why he bought all those, no railroad ever had them," someone remarked.

Ah, but they did -- and wouldn't you know it; the New York Central had a couple for testing. They were supposed to take the place of the 50-foot boxcars that had the Evans loading rack inside. With the rack on a flat,

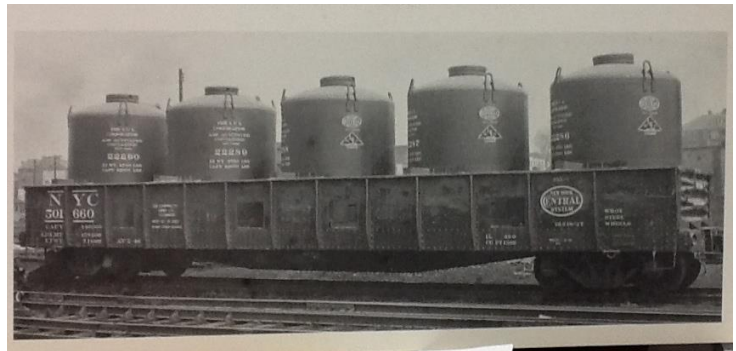


you could load six autos instead of four. For reasons I haven't been able to discover, they never got beyond the testing.

Right. It's not a unique car, just a gondola, but a unique load. NYC put lime in canisters and then loaded the canisters in the gons. Many years ago Athearn offered this car too; however the canisters had no markings on them.

Now, go a do a little research and find your railroad's one-of-a-kind car.

Russ Weis



TIME TABLE

May 17, Sat, 2 PM, Conference Ctr.

May 17-18, K & Club Open House, 10 am to 4 pm

Jun 21, Sat, 2 PM, K&I MRR Club, Buckner, KY

Jul 26, Sat, Noon, Picnic, The Depot, Salem, Indiana

Aug 9, Sat. Summerail Cincinnati

Aug 16, Sat, 2 PM, Southern Indiana Club Swap Meet, Sellersburg

AT THE MAY MEETING

Bob Dawson, Clerk

Twenty four members gathered at the Conference Center, Airport Industrial Park Saturday, May 17 for our May meeting.

Superintendent Russ Weis called the meeting to order at 2 PM. Eric Waggoner gave an update on the 2017 Convention Plans. He is still trying to get details from the Holiday Inn Hurstbourne (HIH) to see how their planned renovations would impact the space we need for the convention. Eric said he has talked to Galt House again, and if we can't get an answer from HIH we will ask the Galt House for a sample contract.

Bob Dawson said he will be visiting Salem in the coming week to meet with the caterer to finalize the menu (see picnic information elsewhere in this issue).

The contest was cabooses; the winner was Patrick Hardesty with his N-scale model. Mark Hedge won the drawing.

Thanks, to Bob and Cathy Kuchler for providing the refreshments.

This was also the annual business meeting (required by our articles of incorporation), and also when the newly elected officers take office. Since Russ Weis was already our Superintendent by appointment, he just moved into his elected term. Russ had vacated our Assistant Superintendent office. When Eric Waggoner assumed his elected position of Assistant Superintendent, that left Eric's former position of Trustee vacant. Since nature abhors a vacuum (or so they say), per our by-laws, the Board of Directors has appointed Fred Soward to fill the remainder of the Trustee term vacated by Eric. Check page six of the Pie Card for the list of our officers and trustees.

CHARLIE KEELING MODEL CONTEST*Fred Soward, Contest Chairman*

JUNE	OPEN LOADS
July	No Contest
August	MOW Equipment
September	Photos
October	Steam Locomotives
November	Displays/Dioramas
December	No Contest
January	Freight Cars
February	Diesels
March	Commercial Structures
April	Passenger Cars
May	Cabooses

The judging is strictly people's choice. If you would also like your model to be judged for the Achievement program, contact Joe Fields and he will arrange to have AP judges present.

We had nine caboose entries for May. Patrick Hardesty took first place with his N scale Midwest Central bay window caboose. Cecil Stewart squeaked into second with one of his Southern Pacific wood cabooses. Mark Hedge won the raffle drawing gift card.

Bob Johnson is maintaining his lead with 17 points for the year. Bill Lynch is keeping pace at second place with 15 points. Todd Whitehead is in third at 8 points. There is a three-way tie for fourth place with Barry Christensen, Joe Fields, and Patrick Hardesty at 7 points each. John Kelly stands alone at 6 points followed by the late Charlie Keeling with 5 points. Cecil Stewart, Doc Shane, and Rob Johnson are tied at 4 points apiece. There's a four-way tie at 3 points each for Jim Harrington, Nat King, Rick Maloney, and Russ Weiss. John Bowman is at 2 points and bringing up the rear are Bob Kuchler, Jack Diehl, and Tom Lindquist at 1 point each for the year.

Just one more contest before we declare this year's winners. Although it's fairly evident that first and second will be a battle between Bob Johnson & Bill Lynch (not necessarily in that order), it's mathematically possible for as many as thirteen members to walk away with the third place gift card for the year.

**JUNE MEETING INFORMATION**

This month's meeting will be Saturday June 21, 2:00 PM at the K & I Model Railroad Club on Hwy 146 in Buckner, KY.

Take I-71 to exit 18 (KY 393). Continue north on Hwy 393 to La Grange Road (KY 146), cross the railroad tracks and turn right. The club house will be on your left in a former firehouse. Please park across the street, keeping the space directly in front of the building available for handicap parking. **The program will be bring a locomotive and run trains.**

PLEASE BRING A CHAIR.

THE DIVISION 8 SUMMER PICNIC will be Saturday July 26, at the Depot Museum in Salem, Indiana. See insert in this issue for details including the menu.

MAINTENANCE TIES FUND 2014

The Maintenance Ties Fund helps underwrite the Member Welfare Fund and the printing of the Pie Card for those members who don't have access to a computer. The Member Welfare Fund provides a gift certificate to a member or spouse who has been hospitalized. It is also used for an expression of sympathy upon the death of a member or a member's spouse. Donations of \$ 5.00 or more to the maintenance ties fund are recognized in the Pie Card.

\$ 5, Anon; \$20-\$25, John Czerwinski, Jim Kuzirian, Mark Hedge; \$40, Steve Taylor; \$50, Ed Brennan, Bob Johnson; \$60, Don Fowler; \$100 Barbara and Fred Soward.

MEMBER WELFARE*Rick Wehr*

A get well card and gift card was sent to Jerry Ashsley who was hospitalized, and a sympathy card to Ralph Bracewell and family on the death of Ralph's father.

NMRA National Convention, Cleveland, Ohio.

July 13-20, 2014

National Train Show July 18-20

Go to: www.nmra.org and click on Convention and Train Show icons for information on registration, hotels, tours, etc. **NO MCR REGIONAL CONVENTION IN 2014**

DIVISION 8 PICNIC SATURDAY JULY 26, 2014

**DEPOT MUSEUM
206 South College Avenue
Salem, IN 47167-1304
(812) 883-1884**

**COME JOIN US AT THE ANNUAL DIVISION 8 PICNIC
WE WILL GATHER BETWEEN 11:30 AM and NOON, EAT AT 12:30
AWARDS FOR MODEL CONTEST WILL BE PRESENTED AT THE PICNIC
(WE WILL BE INSIDE IN AIR CONDITIONING IN THE NEW MEETING ROOM)
There will be plenty of time to visit the train layout and check out new additions to the
museum collections.**

\$ 5.00/PERSON, PAYABLE AT THE PICNIC

MENU WILL INCLUDE: BURGERS, POLISH SAUSAGE WITH ONIONS AND PEPPERS,
BRATWURST, HOT DOGS, BAKED BEANS, POTATO SALAD, COLE SLAW.

BEVERAGES: COFFEE, ICED TEA (SWEET AND UN-SWEETENED), LEMONADE.

DESSERTS: STRAWBERRY AND APPLE PIES, AND A NO SUGAR ADDED DESERT.

COME AN ENJOY THE FELLOWSHIP, GOOD FOOD; TOUR THE MUSEUM AND THE MONON
MODEL TRAIN LAYOUT.

**RESERVATIONS: SIGN UP AT THE JUNE MEETING OR CONTACT MIKE BERRY BY JULY 20,
2014 (SO WE CAN GIVE A COUNT TO THE CATERER)
PHONE: 502-245-1337, EMAIL: mikeberry063@gmail.com**

PIKE SHOW CASE

Right: A scene on Bob Johnson's 4 ft. x 16 ft. S Gauge "American Flyer" layout. Items on the layout are limited to year 1960.



Left: Another scene on Bob Johnson's S-Gauge Layout. Many of the structures are from Plasticville that Bob has modified and repainted. Vehicles are mostly Tootsie Toy that Bob bought shows and sales, many in "rough condition" and cleaned up and repainted. Bob has displayed this layout several times over the years, and at our Division 8 Train Show. Photos by Bob Johnson

Right. A coal mine on Chris Broughton's N-scale Layout.

Photo by Russ Weis



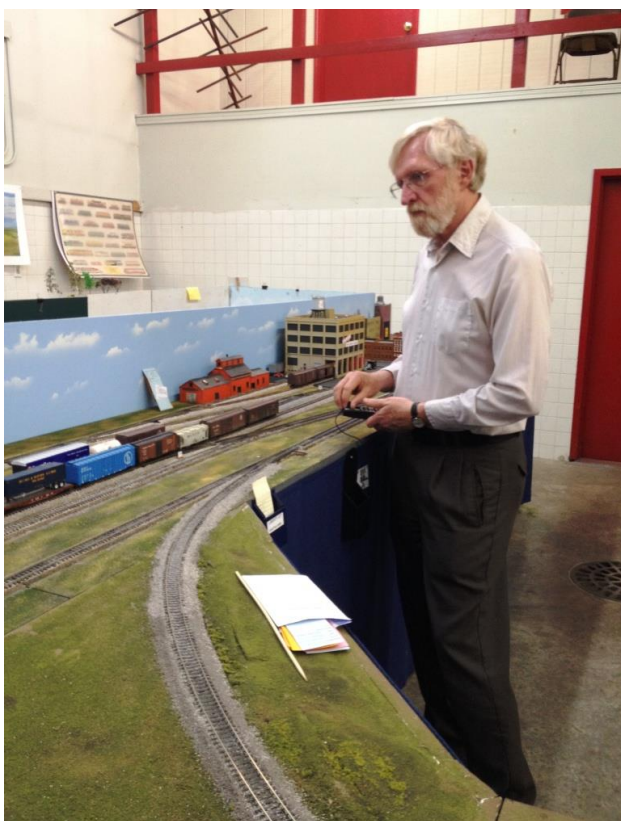
Railfan & Railroad and **Bluegrass Railroad Museum** are sponsoring a **Trains & Tripod Photo Shoot Day**, Labor Day Sept. 1, at the BGRM site located at US62 and Beasley Road in Versailles, KY. Spend the day learning how to shoot railroad scene Photos. Instructor will be Steve Berry, Editor *Railfan & Railroad* magazine. The cost of the class is \$75 and includes two meals and a train ride. Tickets must be purchased in advance through Bluegrass Railroad Museum website. <http://www.bluegrassrailroad.com> or call 859-873-2476. Seats are limited.



**PIKE SHOWCASE
(continued)**

Left. Fred Soward's new HO Athearn Genesis Southern Pacific GP9 getting ready for its first revenue run during the May 2014 K&I evening operating session.

Photo by Fred Soward



Left.

Paul Hegele, who's British layout was featured in the April 2014 Pie Card, is switching Liberty Junction on the K&I during the May 2014 evening operating session.

Photo by Fred Soward

Below Left: Athearn Evans Auto Loader car. This is the car Russ described in this month's Superintendents notes.

Photo from EBay



SCALE REPRODUCTIONS, INC.

ADVERTISEMENT

3073 Breckinridge Ln.

502-459-5849

Large selection of HO & N Scale products. Walthers and Digitrax dealer, Everything you need for you layout.

Helpful sales staff.

Mon-Fri 10-7:30, Sat 10-5

Sunday store hours are seasonal

www.srihobbies.com



PIKE SHOWCASE(continued)

Left. Visitors at the K & I Model Railroad Club's open house, Sunday May 18. The open house was held on Saturday and Sunday.

The K & I Club is hosting our June meeting at this recycled firehouse in Buckner.

Photo by Bob Dawson

KENTUCKY DERBY 2014

While a far cry from the 1950's and 1960's when dozens of passenger extras flowed into town for the Run for the Roses. A few still arrive to relive the memory...

Right is a Chartered Amtrak special down from Chicago at Union Station on Thursday morning May 1.

In the current issue of *Classic Trains* magazine is good article on Derby Trains in the 1960's. This issue should be available at hobby shops and bookstores until August 1.



Derby Day morning found the R. J. Corman Derby Special from Lexington crossing Frankfort Ave. It was followed an hour later by the CSX Governors Special. Norfolk Southern also brought in a train for VIP use. As usual it was "squirreled away" at Youngtown Yard. *All photos by Bob Dawson*

Superintendent:	OFFICERS:	
Asst. Supt:	Russ Weis	502-245-7991
Clerk:	Eric Waggoner	502-244-6628
Treasurer:	Bob Dawson	502-368-2607
	Mike Berry	502-245-1337
	TRUSTEES	
Ed Brennan MMR		502-327-6178
Tom Guentner		502-363-3113
Fred Soward		502-499-0770
COMMITTEE DIRECTORS		
Contests	Fred Soward	502-499-0770
Achievement Program	Joe Fields	502-964-2679
Librarian	Shannon Loose	270-496-4676
Membership	Cecil Stewart	502-252-7814
Member Welfare	Rick Wehr	502-500-6398
Pie Card:	Bob Dawson	502-368-2607
Show Programs	Mike Berry	502-245-1337
Train Show and Sale	Bob Dawson	502-368-2607
Meetings & Program	Russ Weis	502-245-7991
Webmaster	Tom Guentner	502-363-3113
MID CENTRAL REGION OFFICERS		
President:	Merlyn Jarman	812-539-3232
Vice-president:	Bob Weinheimer MMR	304-343-1428
Secretary:	Art Bumpus	

THE PIE CARD
 Division Eight, MCR, NMRA
 Box 99041
 Louisville, KY 40269-0041

Editor & Publisher:
 Bob Dawson
 Asst. Editor: Rick Tipton

The Pie Card is published twelve times a year by Division 8 of the National Model Railroad Association, Mid Central Region.

Please address all correspondence to Bob Dawson, Editor, 7305 Ticonderoga Dr., Louisville, KY 40214 or email: dawsobl@aol.com.

Deadline for submission of articles is the 25th day of the previous month. The Pie Card goes to press by the first of each month.

**DIVISION 8 COMPANY STORE
IS OPEN FOR BUSINESS**






Available:
 Division 8 Long Sleeve Denim Shirts and Polo Shirts
 Division 8 Baseball Caps
 HO L&N Tank Car Kits.

For selections, prices, and order form, go to: div8-mcr-nmra.org and click on "Company Store".

The PIE CARD
 Division 8, MCR, NMRA
 7305 Ticonderoga Dr.
 Louisville, KY 40214