



The Pie Card



Division Eight Newsletter - Mid-Central Region, National Model Railroad Association

Volume 49

November 2015

Number 11

From the Superintendent's Desk



It has been almost a year in our new meeting room at the American Legion, Iroquois Post and everyone seems happy with the facility. Except for one thing, the lighting.

Thanks to the efforts of Bob Johnson and Don Fowler, our meeting room is light and bright. Bob said he would be glad to replace the lights if the division would pay for them. Then it was suggested since the post would now have great lighting, that they give us "X" number of free meeting days equal to the cost of the lights.

All parties agreed and Don stepped up to the plate with his electrical background. Bob and Don spent four full days cleaning and repairing the fixtures, and of course, replaced numerous bulbs.

Unfortunately our October meeting was miss booked, so we had to have our meeting in another room and couldn't see the dramatic change in the lighting. Since it won't be until January when our meeting is back at the post, don't forget to give your thanks to Bob and Don for all their hard work.

Another big thanks to the members who had their layouts opened to all of us before and after our October meeting. I enjoyed seeing some of the great layouts that I had never seen before with their unique buildings. Good work guys!

With that, I would like to make another pitch for you to finish, or start, that area of your layout you would like to show off for our 2017 convention. Yes, I know it's a year and a half away, but we need pictures for **this** May, as we will entice attendees at the 2016 convention.

A good way to get it done is to have an open house, or ops session. I definitely got tons of items checked off my layout list before October's layout tour. So get to work!

One last volunteer request; we need many of you to help set up tables the day before our November train show. Yes, that is Friday the 20th. We are starting at 3 pm and going until all tables are in place. If you can't make it on Friday, then we need your help in taking down the tables after the show. We need all of you, so please let Bob Dawson or myself know when you can help.

Russ Weis

AT THE OCTOBER MEETING

The meeting was held Saturday October 17, 2015, 2PM, at Iroquois Post American Legion. Due to a scheduling glitch by the Legion Post our space was occupied by a wedding reception. Fortunately we were able to move downstairs to the main hall. Russ Weis recognized and thanked Bob Johnson and Don Fowler for all of the hard work they did cleaning and repairing the lights in the meeting area. The Post is compensating us with free room rental.

Bob Dawson passed around a sign-up sheet for volunteers to help with table set up and take down at the November Train Show. We will meet at 3 PM, Friday November 20 at the Moose Lodge to set up the tables. Help is needed again, 3 PM Saturday to take back down after show closes. Mark Hedge reported that the tables for the show are sold out, and there is a waiting list.

There was no new or old Business to discuss. The program was layout tours before and after the meeting. The November meeting will be THURSDAY November 19, 7:30 PM, Southern Indiana Railroad Club in Jeffersonville, Indiana.

TIME TABLE

Nov 19, Thur, 7:30 PM, Div. Mtg., Sou. Ind. Club.

Nov 21, Sat, 10AM-3PM, Div 8 Trainshow, Moose Lodge.

Dec 6, Sun, Noon-5 PM, Open House Ralph Bracewell's

Dec 12, Sat, 6PM, Holiday Party, Rails Restaurant, LaGrange, KY

Jan 16, Sat, 2 PM, Div. Mtg., Iroquois Post.

Feb 20, Sat, 2 PM, Mtg, Location TBS

Mar 17, Thur, 7:30 PM, Mtg., Iroquois Post.

Mar 19, Div 8 Train Show, Moose Lodge.

CHARLIE KEELING MODEL CONTEST*Fred Soward, Contest Chairman*

November	Displays/Dioramas
December	NO CONTEST
January	Freight Cars
February	Diesel Locomotives
March	Commercial Structures
April	Passenger Cars
May	Cabooses
June	Open Loads
July	No Contest
August	MOW Equipment
September	Photos
October	Steam Locomotives

Three people entered seven steam locomotives in the October contest. Cecil Stewart shared four different Southern Pacific and one Missouri Pacific types with us. But, in the end, Bob Kuchler won with his N Scale Gorre & Daphetid Lines Shay. Tom Lindquist was a ridiculously close second with his nicely weathered HO scale Louisville & Nashville 2-8-2.

Bob's Shay started as an undecorated Atlas model. He painted and weathered it to represent G&D Lines #7. The oil bunker was replaced with brass parts and real coal. He also installed an engineer in the cab and replaced the factory installed smokestack. Inside, Bob installed a Digitrax D2123 decoder, which is definitely not a plug-and-play operation!

Standings to date: Bob Kuchler stands alone in first with 9 points; Bill Lynch is in second place with 5 points; Barry Christensen is in third place with 4 points; John Czerwinski and Tom Lindquist are tied in fourth place with 3 points; Patrick Hardesty is in fifth place with 2 points; tied for sixth place with 1 point are Bob Johnson, Cecil Stewart, Joe Fields, and Robin White.

Bring a railroad related display/diorama to the November meeting. The judging is strictly people's choice. I'll have blank contest entry forms for anyone who needs one, but you can save yourself some time at the meeting by downloading the entry form from the Division 8 website or Facebook page and completing it prior to arriving at the meeting.

Mike Berry won the gift card drawing.

ACHIEVEMENT PROGRAM*Joe Fields, Achievement Program Chairman*

Hi all, sorry I couldn't attend the October meeting, I was camping out with my Boy Scout troop at Fort Knox. My modeling efforts have kind of come to a standstill due to doctor's appointments for me and taking my Mother to her appointments, but hopefully these are winding down and I can get back to modeling. I hope everyone is adding to their own layouts and will soon be giving me a call to come by and see their efforts. I have been asked to help out with another aspect of our 2917 convention. soliciting door and raffle prizes. If you know anyone or a business who would like to donate, please let me know. Donations are tax deductible and the division can provide letters for tax purposes. That's it for this time, hope to see everyone at November's meeting, remember, the contest is displays and dioramas. If you need something judged please let me know.

**NOVEMBER MEETING INFORMATION**

This month's meeting will be THURSDAY evening, November 19, 7:30 PM at the Southern Indiana Model Railroad Club in Jeffersonville, IN.

They are located in the basement of the First Presbyterian Church, Walnut and Chestnut Streets, Jeffersonville. Take exit 0 from I-65 to Court Avenue. Continue on Court Avenue ½ miles to Walnut Street. Turn right on Walnut and go two blocks to Chestnut. Turn left on Chestnut, the church is on the southeast corner, park in the lot on the east side of the church. Enter from the parking lot. The club is in the basement (there is an elevator).

NOTE: Be aware of lane changes on I-65 due to the bridge construction.

DIVISION 8 CHRISTMAS PARTY

Saturday December 12, 2015

Rails Restaurant & Bar

117 E. Main Street

LaGrange, KY

Gather at 6 PM

Dinner at 6:30 PM



Entrée choices have not been determined at this time, but will be similar in choice and price as last year, payable at the party.

PLEASE CALL MIKE BERRY AT 502-245-1337 WITH THE NUMBER IN YOUR PARTY AND ENTRÉE CHOICES (entrée choices will be available at the November meeting and in the December Pie Card) BY MONDAY DECEMBER 7. YOU MAY ALSO MAKE YOUR RESERVATION BY EMAIL AT: Mikeberry063@gmail.com.

MAINTENANCE TIES FUND 2015

The Maintenance Ties Fund helps underwrite the Member Welfare Fund and the printing of the Pie Card for those members who don't have access to a computer. The Member Welfare Fund provides a gift certificate to a member or spouse who has been hospitalized. It is also used for an expression of sympathy upon the death of a member or a member's spouse. Donations were received in August from Stephen Taylor and Jim Kuzirian. Donations of \$ 5.00 or more to the maintenance ties fund are recognized in the Pie Card. Fred and Barbara Soward, \$100, \$60 Bob Johnson; \$ 50 John Ottman, \$40 John Czerwinski; \$25 Ed Brennan; \$20 each John Bowman, Bob Lawson, Bob Kuchler; \$ 30, Stephen Taylor; \$33, Jim Kuzirian.



OCTOBER CONTEST WINNER

Left: Bob Kuchler's N-Scale G & D Shay #7. Bob's model started as an undecorated Atlas model. See the Charlie Keeling Contest report on page 2 for the modifications Bob made to this model.

Right: "Don, did you get the same rivet count that I did?"

Photos by Fred Soward



TRAIN SHOW and SALE

Sponsored by Louisville Division 8 • National Model Railroad Association

SATURDAY, NOVEMBER 21, 2015 - 10:00 A.M. - 3:00 P.M.
LOCATION: MOOSE LODGE 5
4615 FEGENBUSH LN, LOUISVILLE, KY



- Free Parking
- Great Food & Beverages
- Model Trains in All Scales
- Retail Sales
- Operating Layouts and Displays
- Hourly Door Prizes!

NEW LOCATION

Dealer Tables available • \$ 30 per table.
 For information on future show and meetings, visit us on our website at:
<http://div8-mcr-nmra.org/>



Admission: \$ 6.00 per person
Children under 12 FREE with an adult.

WE NEED YOUR HELP WITH THE TRAIN SHOW.

FRIDAY

Volunteers are needed to set up the tables 3 PM Friday November 20.

SATURDAY

The doors will open for vendors at 7:30 AM. Help is needed at that time to set up a few remaining tables, and assist the vendors to their tables. Help can also be used during the day with admissions. Help is again needed after 3 PM to take the tables down, and put the room back in order.

There was a good response to the sign-up sheet at the October meeting but more help will make it go quicker.

OCTOBER LAYOUT TOUR

Photos by Bob Dawson



Thanks to those who opened up their layouts for the tour:

- Ralph Bracewell
- Chris Broughton
- Tom Guenthner
- Bob Kuchler
- Rick Maloney
- John Ottman
- Russ Weis
- Bill Wright

We can be justly proud of the layouts in our area.

Above:

Checking out John Ottman's HO layout.

Left to right: Don Fowler (back to camera), John Kelly, Todd Whitehead, and John Ottman.

Right: Bob Kuchler's N-Scale.

Left to right: Fred Soward (back to camera) Craig Hatter, Doc Shane, Bob Kuchler, and Ralph Bracewell.

Below: Left to right, Eric Waggoner and Mark Norman at Ralph Bracewell's HO layout.



SCALE REPRODUCTIONS, INC.

ADVERTISEMENT

3073 Breckinridge Ln.

502-459-5849

Large selection of HO & N Scale products. Walthers and Digitrax dealer, Everything you need for you layout.

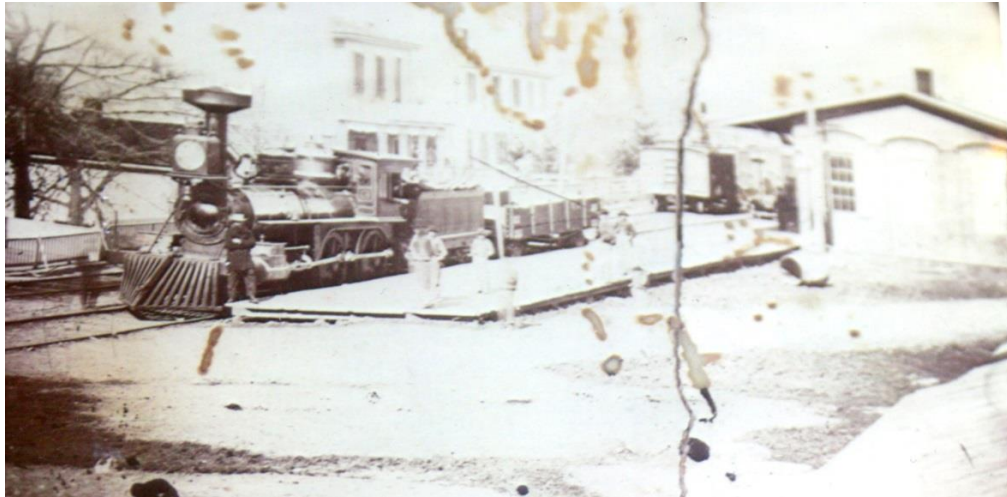
Helpful sales staff.

Mon-Fri 10-7:30, Sat 10-5

Sunday store hours are seasonal

www.srihobbies.com

TRACK SIDE THEN AND NOW-EMINENCE, KENTUCKY



Louisville & Frankfort and Lexington & Frankfort locomotive "Scott" at Eminence. The photo is usually identified as being taken in 1860; however the Scott was built by Baldwin Locomotive Works in 1864. Probably taken after 1864, as the track appears to be five foot gauge which was changed in October of that year order of the War Department to

support the Union Army in its move on Atlanta (enabling the Lexington Railroad to connect with L & N at Louisville). While it is copied from a damaged print it shows the depot at Eminence. In most published copies of this photo the depot is cropped out. The depot was probably built in 1851 when the railroad was completed to Louisville from Frankfort by way of LaGrange.

The photo above is from the collection of the late Bill Bauer.

Right: Fast forward to 2015.

The railroad no longer runs through Eminence. The 1851 depot was replaced over the years, probably more than once. The most likely date for the current building is circa 1914.

Photos by Bob Dawson



Passenger train service ended on July 1, 1955 with demise of the "Bluegrass Local" between Lexington and Louisville. The route was out of service in 1959, and the track was taken up some years later, and the building became the local office for Kentucky Utilities, an electric utility company.

Today it serves as the Eminence City Hall.

WIRE GLUE-AN ALTERNATIVE TO SOLDERING*By John Czerwinski*

I discovered Wire Glue on EBay. I was intrigued by the notion that it might be possible to obtain a good electrical joint using an adhesive rather than by my traditional method of melting ties with a soldering iron. Wire Glue is a black fluid, dense with carbon dissolved in a resin adhesive. It gives the rail web the dark appearance typical of grease spots found on prototype rail.

There is a place on my installed track where enthusiasm had gotten ahead of planning with the result that there was a segment of track that might not have adequate signal feed. To counter weak signal feed a pair of feeders were Wire Glued to the affected track. I was reluctant to tackle this project because my soldering skills are not all they could be after several years lacking practice. The track segment and the track to which it connected had gone into place very well so I was reluctant to relay the track to add terminal rail joiners.

To see if Wire Glue worked as advertised an experiment was conducted. At a handy, easy to reach location, two feeder holes were drilled; two solid wire 22 gauge feeder wires were made; the wire's track contact end was bent into two L shapes. The first L was about ¼ inch long and 90 degrees to the track. The second 'L' had roughly a ¼ inch piece of wire parallel to the track. This last bend turned parallel to the track. Next the last feed wire segment was placed in the outside of the rail web. The wire below the first bend was adjusted to keep the wire fixed in place on the rail web. This was done by making the wire press against the side of the feeder hole while the free end of the wire pressed against the rail web. This process was repeated for the other rail. Lastly, Wire Glue was applied using a toothpick per instructions. The wires were left in place, untouched over night as the Wire Glue cured.

When tested with a multimeter. The result was zero ohms.

The leads were tugged to check the bond strength. The bond is strong enough to survive the tugging needed to connect the track feeders to a terminal block. The experiment was expanded to include adding feeders to six yard tracks. Out of twelve bonds only one failed when tugged. On examining the failed bond the wire was found to be curved and did not lay closely along the rail web. This decreased the bond area resulting in a defective bond. The strongest bond resulted when the wire lay closest to the rail web and parallel to it.

Wire Glue can be used to create a bond between rails across a loose rail joiner. Another use is creating joints in the low power feeders to structure lighting or animated signs. This can be particularly handy when working in close quarters near easily melted materials.

Wire Glue is a quality product that met its advertised capabilities.

WEATHERING

Right: An example of the weathered cars found on Chris Broughton's N-Scale Layout.

"I used a variety of techniques on the Monon car. I used chalk to fade the paint, acrylics applied with Q-tips for the majority of the weathering, and a little grime and dust applied with an airbrush. Dull coat seals the finish. "

Chris





LAYOUT TOURS *continued*

Photos by Bob Dawson

Left: John Kelly checking out a detail on Chris Broughton's layout.

Photos by Bob Dawson

Right: Bill Wright's. Left to right, back to camera in distance, Craig Hatter; Bill's granddaughter and son (back to camera); Jim Kuzirian; Bill.



OPEN HOUSE IN DECEMBER

Ralph Bracewell is hosting a layout open house on Sunday, December 6, Noon to 5 PM.

Ralph is at 107 W. Woodlawn Ave., Louisville, KY 40214. Phone: 502-367-7657.

Park on 1st Street North of Woodlawn Ave. Walk west in the short alley to rear of his house. Railroad crossing signal in yard. Enter at the rear; the layout is on the second floor.

Superintendent:	OFFICERS:	Russ Weis	502-245-7991
Asst. Supt:		Eric Waggoner	502-244-6628
Clerk:		Bob Dawson	502-368-2607
Treasurer:		Mike Berry	502-245-1337
	TRUSTEES		
Ed Brennan MMR		502-327-6178	
Tom Guentner		502-363-3113	
Fred Soward		502-499-0770	
COMMITTEE DIRECTORS			
Contests		Fred Soward	502-499-0770
Achievement Program		Joe Fields	502-964-2679
Librarian		Open	
Membership		Cecil Stewart	502-252-7814
Member Welfare		Rick Wehr	502-500-6398
Pie Card:		Bob Dawson	502-368-2607
Show Programs		Mike Berry	502-245-1337
Train Show and Sale		Bob Dawson	502-368-2607
Meetings & Program		Russ Weis	502-245-7991
Webmaster		Tom Guentner	502-363-3113
MID CENTRAL REGION OFFICERS			
President:		Steve Kaplan	
Vice-president:		Michael Hohn	
Secretary:		Art Bumpus	

THE PIE CARD
 Division Eight, MCR, NMRA
 Box 99041
 Louisville, KY 40269-0041

Editor & Publisher:
 Bob Dawson
 Asst. Editor: Rick Tipton

The Pie Card is published twelve times a year by Division 8 of the National Model Railroad Association, Mid Central Region.

Please address all correspondence to Bob Dawson, Editor, 7305 Ticonderoga Dr., Louisville, KY 40214 or email: dawsobl@aol.com.

Deadline for submission of articles is the 25th day of the previous month. The Pie Card goes to press by the first of each month.

**DIVISION 8 COMPANY STORE
IS OPEN FOR BUSINESS**






Available:
 Division 8 Long Sleeve Denim Shirts and Polo Shirts
 Division 8 Baseball Caps
 HO L&N Tank Car Kits.

For selections, prices, and order form, go to: div8-mcr-nmra.org and click on "Company Store".

The PIE CARD
 Division 8, MCR, NMRA
 7305 Ticonderoga Dr.
 Louisville, KY 40214