

# The Pie Card

Volume 53, March, Number 3



Mid Central Region, National Model Railroad Association



## **From the Superintendent's Desk**

*By Fred Soward*

Robert Fulghum said it in his book with 16 rules, "All I Really Need to Know I Learned in Kindergarten."

Rule number 1 – share everything.

Rule number 16 - And then remember the Dick-and-Jane books and the first word you learned—the biggest word of all—LOOK.

One of the big reasons we have our two Train Show and Sale events is so that we can share our hobby with others. Sure, we make some money so that we can do other things during the year, but the big reason is to share. Hopefully, our attendees are following rule number 16 and looking as well as shopping while they're with us. As we know, there will be plenty of sales tables from our dealers, and some of our own members will have tables. There will also be a few layouts at the Spring Show, brought in by area clubs and individuals so that they can share what they've done. Those who are looking can see what they might be able to do and eventually share what they've done with others as well.

We've recently added "Information Stations" at our shows. That's where our lookers can find information that is strictly informational – no sales. We have the NMRA station staffed by a couple of our members. We have the "Women in Model Railroading" station staffed by one or more of our female members. The Pikeville switching layout is where we talk about the basics of building a layout, electrical (DC vs DCC), basic scenery, and we even get to do a little bit of ops. We have a new boxcar display, created by John Stolz, showing the different scales (Z through G) using the boxcars donated many years ago by Bob Johnson.

We sure could use a couple more "Information Stations" at the show. If you have something you think would be appropriate, talk to Ron Ellison. There are few requirements – You have to be there to present your information and answer questions. That's it -- be present, show or demonstrate something about model railroading, talk about it, answer questions about it. If you have something to share, we'll find room for you. And, yes, there's still time to get it ready to rock-n-roll before the March 23, 2019 show.

If you're working on your Association Volunteer AP certificate, sharing at the show will count. If you already have that, you can use the experience at your Information Station as a building block toward a full-blown clinic at one of our Division meetings. That clinic could count toward your Author AP certificate.

Even if you're not working toward MMR, the feeling most everyone receives from sharing knowledge and experience is extraordinary. As a lifelong learner and instructor, there's no better feeling than seeing people's eyes light up as they have an "ah ha" moment when they suddenly understand what they initially thought was terribly difficult and very complex. Sharing is just one more way to make this awesome hobby of ours be even more fun!

## **TIME TABLE**

**Mar 16**, Sat 2 PM, Div. 8 Mtg. 600 Room.

**Mar 23**, Sat 10AM-3PM, Division 8 Train Show and Sale, Moose Lodge.

**Apr 6**, Sat 9AM-2PM, KRM Train Show & Sale, New Haven Ky.

**Apr 20**, Sat 2 PM, Div. 8 Mtg. 600 Room.

**May 2-5**, 2019 MCR Convention, Boardman, Ohio.

**May 18**, Sat 2 PM, Div. 8 Mtg. 600 Room.

**Jun 15**, Sat 2 PM, Div. 8 Mtg. 600 Room.

Jul 20, Sat, Picnic, Salem Depot.

### **YOU ARTICLES AND PHOTOS ARE NEEDED**

The Pie Card depends on you for articles and photos. An article in the Pie Card could count toward your Author AP Certificate. Submit a photo of your layout, or a layout you have visited. Do any railfanning? Submit any pictures you may have taken. Please send to the Pie Card Editor: dawsobl@bellsouth.net.

**CHARLIE KEELING MODEL CONTEST**

*Barry Christensen and Bob Kuchler Contest Co-Chairmen*

<b>March</b>	<b>Structures</b>
April	Passenger Cars
May	Cabooses
June	Open Loads
July	NO CONTEST
August	MOW Equipment
September	Photos
October	Steam Locomotives
November	Displays/Dioramas
December	NO CONTEST
January	Freight Cars
February	Diesel Locomotives

There were six locomotive entries representing four builders and eras for the February 2019 Charlie Keeling Model Contest. Steve Lasher won first place with his HO scale New York Central Baldwin diesel electric. Joe Fields took second with his O scale L&N GP-9. Third was shared by Bob Johnson for his Pennsy GG-1 electric and Bill Lynch for his EMD SD60E in the Norfolk Southern veteran honors paint scheme.

Current contest standings are: Bill Lynch first with 13 points; John Stoltz and Joe Fields (score increased by one to correct addition error) tied for second with 10; Rick Maloney and Steve Lasher tied for third with 8; Bob Johnson with 6; Ron Ellison with 4; Joe Martin, Bob Frankrone and Mike Shane with 3; Patrick Hardesty with 2; and Rob Johnson, Russell Weis, Chris Broughton, Cecil Stewart and Tom Guentner with 1.

Ron Ellison won the Scale Reproductions gift card.

The contest at the March meeting will be for structures.

There will be blank contest entry forms for anyone who needs one at the meeting. You can save yourself some time at the meeting by downloading the entry form from the Division 8 website or Facebook page and completing it prior to arriving at the meeting.

The judging is strictly people's choice. If you would also like your model to be judged for the Achievement program, contact Joe Fields and he will arrange to have AP judges present.

**MARCH MEETING INFORMATION**

The March meeting is 2 PM Saturday March 16, at the 600 Room, first floor of the 600 Building, 600 N. Hurstbourne Pkwy. 40222. Use the Whittington Pkwy. entrance. Program: Bruce McKeown will discuss "Building and Modifying Models". Bob Kuchler is providing refreshments. Russ Weis will host an open house following the meeting (see details on page 4).

**MAINTENANCE TIES FUND 2019**

The Maintenance Ties Fund helps underwrite the Member Welfare Fund and the printing of the Pie Card for those members who don't have access to a computer. The Member Welfare Fund provides a gift certificate to a member or spouse who has been hospitalized. It is also used for an expression of sympathy upon the death of a member or a member's spouse. Donations to date: \$20, John Czerwinski; \$11, Jim Kuzirian.

**FEBRUARY MEETING REPORT**

*By Bob Dawson, Clerk*

The February meeting was held on Saturday February 16, at the South Louisville Antique and Toy Mall. Attendance was 31, plus the operators of the layouts at the Toy Mall. We were welcomed by Bob Johnson. Bob said the 0-6-0 layout has been running at the Toy Mall for ten years.

Superintendent Fred Soward asked who had received the on-line ballots for the Mid Central Region Convention. He said if you have not, then NMRA does not have a correct E-mail address on file for you.

Mark Hedge reported that 53 tables have been reserved and paid for our March 23 Train Show and Sale. 11 more are reserved and waiting for payment. Show Chairman Ron Ellison had a sign-up sheet for volunteers to help with set up, dealer move in, and tear down.

Fred Soward said the Picnic Committee has given up on the French Lick or Jasper. He said we couldn't get together on a schedule that would work for us. He said the committee is looking at returning to the Depot Museum in Salem, IN.

The minutes for the February Meeting are posted on the Division Website. Click on "Members Page".

**SURPRISE!**

Unbeknown to him, Fred Soward completed and sent in the paperwork for Ron Ellison for Association Volunteer.

With the help of Frank Koch, NMRA Achievement Program Chairman, Ron's certificate arrived in time to be presented at the February meeting.

Right: Ron (in yellow jacket) being presented with his Certificate of Achievement by Joe Fields, Division 8 AP Chairman.

Photo by Fred Soward.



**CHARLIE KEELING MODEL CONTEST**

Left:

Steve Lasher's HO Baldwin NYC road switcher. Steve added awnings, speed recorders, MU hoses, number boards, ATS shoes, and wire grabs, scratch-built a motor generator set, and made many other improvements to the model.

*Photo by Fred Soward, caption by Barry Christensen*



Above:  
Joe Fields took second with his O scale L&N GP-9.



*Photos by Fred Soward*

Above:  
Bill Lynch and Bob Johnson tied for third place.  
Top: Bill Lynch's Norfolk Southern SD60E in honoring veterans paint scheme.  
Bottom: Bob Johnson's Penny GG-1 electric.



### **“I HAVE A GUY”**

*By Russ Weis, Photo by Russ Weis*

You may have overheard Fred Soward and I making light of the phrase “I have a guy” which came from one of Fred’s visits to an out of town convention layout. Fred asked the owner of the layout the usual questions; how did you do your backdrop, what type of weathering did you use on that building, and so on. As it turned out the owner did almost nothing on his layout as he “had a guy” do all the things most of us enjoy doing on our layouts.

On the other hand, I wanted to do everything on my layout which is why I have so many buildings in their basic

forms, but not at all finished. It works out well for an operating session as operators see a basic building where they need to spot a car, however not even close for picture taking.

So along comes Steve Lasher and offers to finish the East Buffalo yard office which you saw in last August’s Pie Card. Many of you know Steve’s good work with weathering cars and engines, but Steve hadn’t yet done many structures. Well, I can tell you he is also a wiz-bang at structures. Steve has gone on to do many more structures (pictured above) on my layout. Lucky me, “I have a guy.”

My point is that all the layouts I have visited the owner has not done it all. That lovely backdrop on Gerry Albers’ layout, yep, he “had a guy.” Our old friend Jim Petro “has a guy” who knows his way around computer programming and did the programming for Jim’s CTC signaling.

The hard part is finding the right guy to help in the areas where you need help. I’ve had many offers (thank you) to help with track work, but that’s what I’m good at. The same with the electrical work. I can put a building together, but the detailing and weathering that Steve can bring to a model is way above my abilities.

So it’s okay to “have a guy” or two; just don’t have them do your whole layout and call it YOUR layout.

### **LAYOUT OPEN HOUSE AFTER THE MARCH MEETING**

This is your chance to see what Steve Lasher has done on Russ Weis’s layout, as well as additions Russ has made since the last time you may have seen it. Russ’s address is 601 Davenport Dr. 40245

Russ is hosting an open house after the meeting until 6 PM. Directions from the 600 Room.

- Turn RIGHT onto Hurstbourne Parkway and then LEFT onto U.S. 60-Shelbyville Rd.
- EAST 7.6 miles on Shelbyville Road to Flat Rock Road (traffic light).
- LEFT onto Flat Rock Rd., go 0.03 miles to Glen Lakes Drive.
- LEFT onto Glen Lakes Drive, go 0.02 miles on Glen Lakes Drive to Davenport Dr.
- RIGHT onto Davenport Dr. Go 0.04 miles on Davenport, 601 is on the right.



### **UPDATED BOX CAR DISPLAY**

For many years we have been using a collection of box cars to illustrate the relative size of the common model railroad scales. These cars are on “permanent loan” to the Division by Bob Johnson.

Thanks to John Stoltz we now have a way to display these cars at trains\ shows. Thanks to John for building and lettering this display (left).



**GRAVEL SWITCH L & N RR MP 79.49**

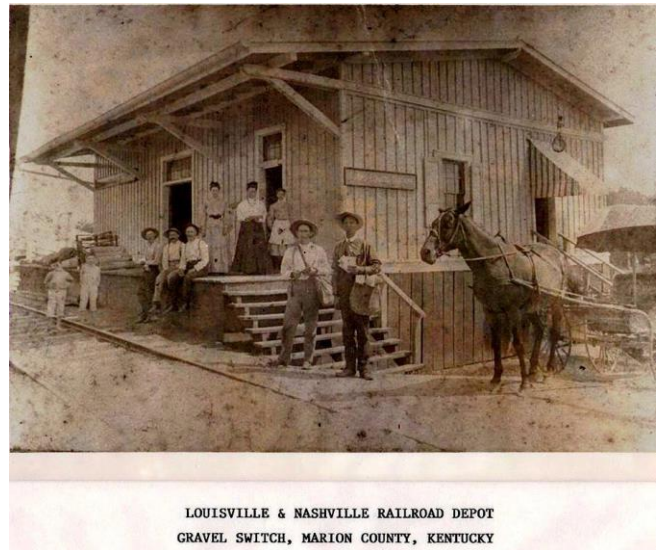
Gravel Switch, KY (not to be confused with the fictional Grinder’s Switch the fictional home of Minnie Pearl of Grand Ole Opry fame) is located in Marion County, KY on the former L & N Lebanon Branch. The Lebanon Branch ran from Lebanon Junction (in Bullitt County south of Shepherdsville) to Sinks (in Laurel County) where it joined the Cincinnati-Corbin KY Subdivision.

Left: Map showing Lebanon Branch from L & N Employee’s Louisville Division Time Table #77, dated April 26, 1953. Gravel Switch is not show but it was approximately 3 miles east of Rileys.

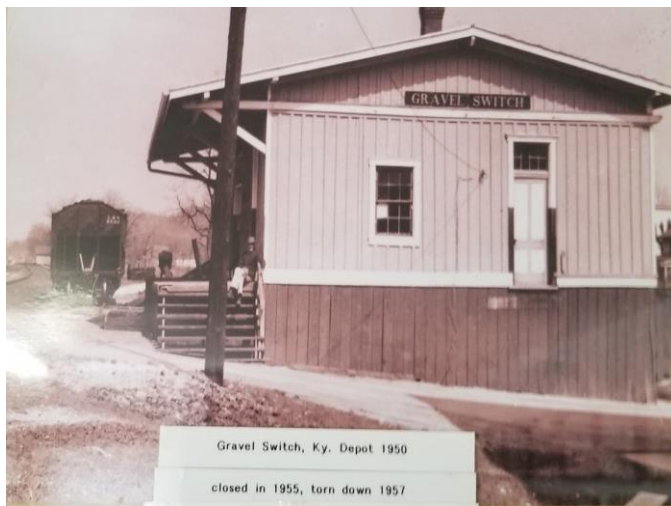
The branch to Lebanon, KY (MP 66.62) had been completed on November 10, 1857. After the Civil War the branch was slowly extended with the goal of reaching Corbin, KY and eventually to Knoxville, TN.

In 1867 the Lebanon Branch was extended eastward and a spur line was run to a large gravel deposit that was tapped by the railroad to be used as ballast. A small village grew up at the switch to the spur and came to be known as Gravel Switch. Gravel Switch gained a post office on December 2, 1870.

Photos from posts by Joshua Young to L&N Lebanon Branchline Facebook page.



LOUISVILLE & NASHVILLE RAILROAD DEPOT  
GRAVEL SWITCH, MARION COUNTY, KENTUCKY



In 1951 Gravel Switch was served by four passenger trains, local numbers 23 and 20, and the Louisville section of the Flamingo, trains 21 and 26. In 1953 only the Flamingo was left, and Gravel Switch was no longer listed on the Employee’s Timetable. All passenger service on the Lebanon Branch ended in 1958 when the Flamingo’s Louisville section was discontinued.



Right: East bound CSX local with a Seaboard unit in the lead passing Gravel Switch Volunteer Fire Dept. Station on February 1, 1986. Most of branch was abandoned in 1987.

Photo by Mark Loyd from Facebook Post by Joshua Young.

PIKE SHOW CASE



Left:

BIG TRAINS at the South Louisville Antique & Toy Mall. This is just one of several operating layouts that are running every Sunday that you can visit for FREE every day the mall is open.

Photo by Fred Soward.



Above:

A trio of EMD F3's lead a fast freight on Russ Weis's HO scale New York Central-Eastern Division. This layout will be open until 6 PM after the March Meeting. See page 4 for directions.

Photo by Bob Dawson

Above:

The Massive Schlitz grain elevators on the Beer Line branch of Bob Kuchler's N-Scale Milwaukee Road layout. Bob's layout will be open following the April meeting.

Right: Roundhouse on John Bowling's HO L & N layout in Danville, KY.

Photos by Bob Dawson





**TRACKSIDE WITH BOB FRANKRONE**

Union Pacific #4012, a 4-8-8-4 Big Boy, stands proud near the entrance of the Steamtown National Historic Site in Scranton, PA. Bob Frankrone took the photo in September of 2012 during one of his two visits there while living and working in northwestern New Jersey.

*Photo and caption by Bob Frankrone*

**K & I MODEL RAILROAD CLUB AT FERN CREEK LIBRARY.**

The K & I Model Railroad Club's traveling layout was set up at Fern Creek Public Library last month.

The traveling layout will be set up at St. Mary's Center on Aiken Road April 1 thru April 6. See the K & I website: [www.kandimrr.com](http://www.kandimrr.com) for details.

*Photo by Fred Soward*



**VOLUNTEERS NEEDED FOR SPRING TRAIN SHOW & SALE**

We need volunteers to help with setup, dealer unloading, and teardown. The times are:

- 3:00 PM Friday, March 22 - Setup
- 7:15 AM Saturday, March 23 - Dealer unloading assistance
- 3:00 PM Saturday, March 23 - Teardown

There will be a signup sheet again at the February Division 8 meeting. If you would like to signup but are unable to attend the February meeting, just email, text or phone me.

Ron Ellison Train Show & Sale Chairman (502) 807-7683. Email: [division8.mcr.nmra@gmail.com](mailto:division8.mcr.nmra@gmail.com)

## TRAIN SHOW AND SALE

Sponsored by Louisville Division 8 - National Model Railroad Association

**SATURDAY, MARCH 23, 2019 10:00 AM to 3:00 PM**

**MOOSE LODGE #5  
4615 FEGENBUSH LN, LOUISVILLE, KY 40228**



- Great Food & Beverages
- Model Trains in All Scales
- Retail Sales
- Operating Layouts and Displays
- Hourly Door Prizes!

Dealer Tables Available - \$30 per table  
For information on future shows and meetings  
Website: <http://div8-mcr-nmra.org>  
Facebook: NMRA-Division 8-Louisville, KY

LOCATION:



Admission: \$6.00 per person  
Children under 12 FREE with an adult

**Division 8, MCR, NMRA**

<http://div8-mcr-nmra.org/>

**THE PIE CARD**

Division Eight, MCR, NMRA  
Box 99041  
Louisville, KY 40269-0041

Editor: Bob Dawson  
Asst. Editor: Rick Tipton  
Publisher EPieCard-Tom Guenthner  
Publisher Print Pie Card-Ron Ellison

The Pie Card is published twelve times a year by Division 8 of the National Model Railroad Association, Mid Central Region.

Please address all correspondence to Bob Dawson, Editor, 7305 Ticonderoga Dr., Louisville, KY 40214 or email: [dawsobl@aol.com](mailto:dawsobl@aol.com).

Deadline for submission of articles is the 25<sup>th</sup> day of the previous month. The Pie Card goes to press by the first of each month.

**OFFICERS**

Superintendent:	Fred Soward	502-499-0770
Asst. Supt:	Eric Waggoner	502-244-6628
Clerk:	Bob Dawson	502-368-2607
Treasurer:	Mike Berry	502-245-1337

**TRUSTEES**

Tom Guenthner	502-363-3113
Russ Weis	502-245-7991
Ron Ellison	502-807-7683

**COMMITTEE DIRECTORS**

Achievement Program	Joe Fields	502-396-3503
Contests	Barry Christensen	270-272-6069
	Bob Kuchler	502-899-5858
Librarian	Mike Berry	502-245-1337
Membership	Cecil Stewart	502-252-7814
Member Welfare	Rick Wehr	502-500-6398
Marketing	Ron Ellison	502-807-7683
Meetings & Program	Russ Weis	502-245-7991
Pie Card	Bob Dawson	502-368-2607
Train Show and Sale	Ron Ellison	502-807-7683
Webmaster	Tom Guenthner	502-363-3113

**MID CENTRAL REGION OFFICERS**

President:	Bob Weinheimer	304-343-1428
Vice-president:	Michael Hohn	304-296-6303
Secretary:	Jerry Doyle	304-638-2826
Treasurer:	Bob McKay	914-591-5415



NMRA Mid Central Region  
May 2 - 5, 2019 Convention  
Boardman, Ohio

More details at  
<https://www.div1-mcr-nmra.org/the-acy-bullet-2019>



NMRA Division 1 MCR

**DIVISION 8 COMPANY STORE IS OPEN FOR BUSINESS**



**Available:**

Division 8 Polo Shirts, Long Sleeve Denim Shirts, and Fleece Jackets  
For selections, prices, and order form, go to: [div8-mcr-nmra.org](http://div8-mcr-nmra.org) and click on "Company Store".

